

ROBUST®



روباست هوزس ذ.م.م
ROBUST HOSES L.L.C

COMPANY PROFILE

ROBUST HOSES LLC

ROBUST BUILDING | ITTIHAD STREET
EMIRATES MODERN INDUSTRIAL AREA
P.O. BOX 2008 | UMM AL-QUWAIN

TEL : +971 6 7679777
EMAIL : INFO@ROBUSTHOSES.COM
WEBSITE : WWW.ROBUSTHOSES.COM

TRADE LICENCE NO. : 32708 | TRN NO. 100577565300003





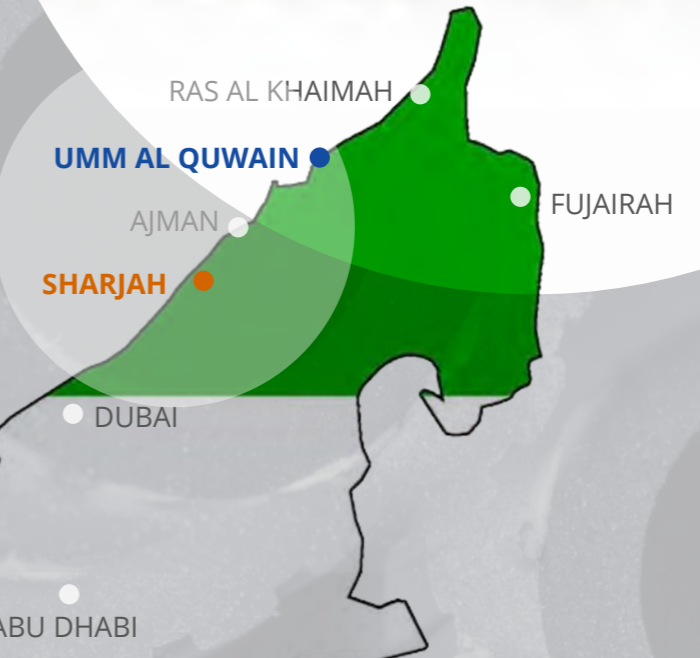
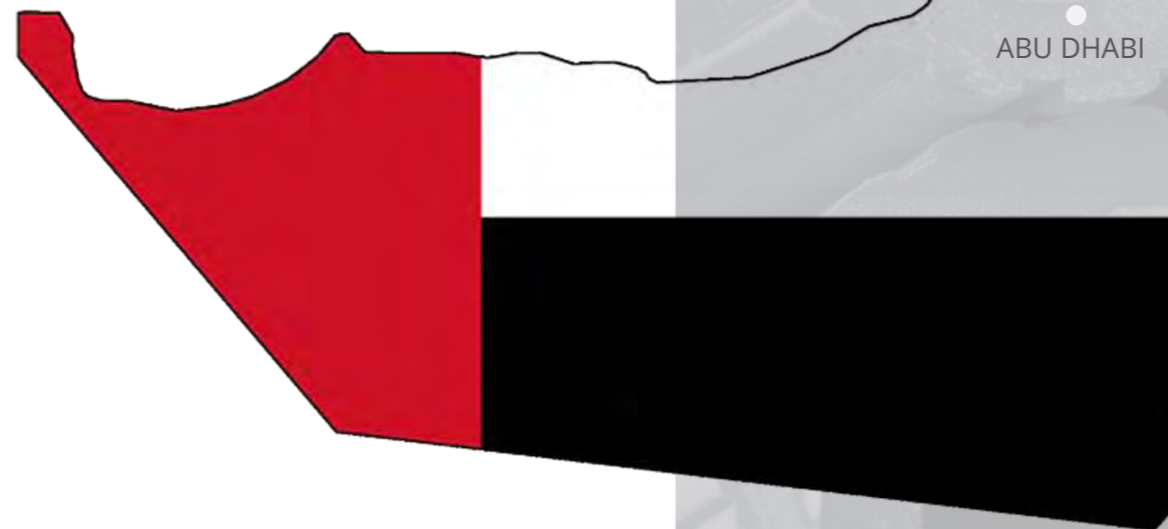
THE ROBUST TEAM

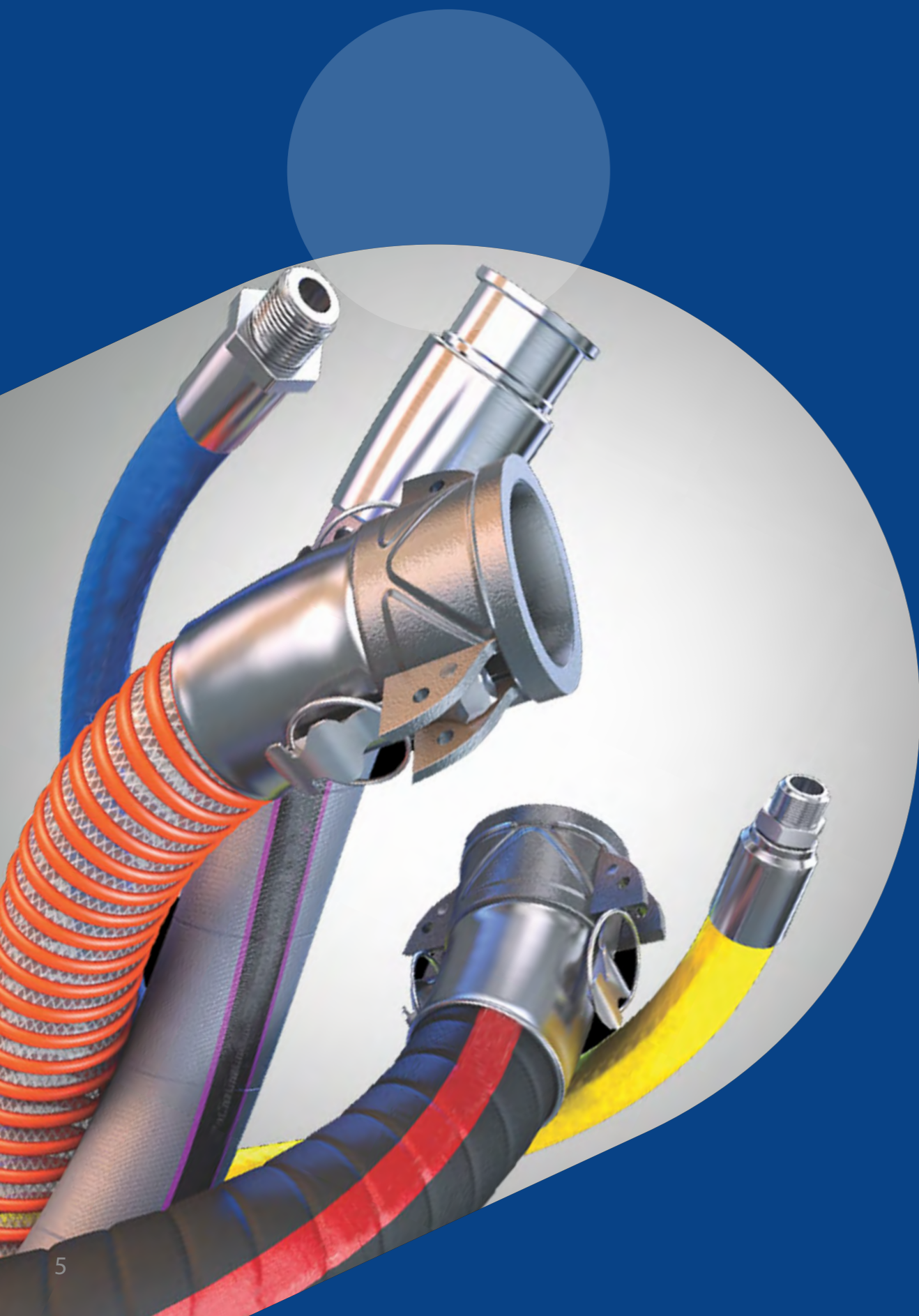
About Us

Robust Hoses LLC started its journey in 1989 under the name of Al Bandar General Trading in Dubai and in 1999 another company was established in Sharjah under the name of Al Banar Trading Company LLC, in 2016 we recognized that in order to give quality service to our existing customers which are in every single country in Middle East and in Africa. We have invest in the future

By investing in a new modern facilities where we have the capacity to grow at least for the next 10 years . The first and foremost point is to provide excellent service and the highest possible quality of the products to our customers.

We believe in customer satisfaction as the most important element of our policy





A Leading Distributor

Wide range of hydraulic and industrial Hoses and Fittings with more than 30 years of experience in the field of fluid transfer products and the key supplier in a broad range of applications such as;

- Oilfield
- Ship maintenance industry
- Construction
- Steel mills
- Aluminum smelter plants
- Chemical industry
- Heavy equipment
- Aftermarket & original equipment manufacturing
- Food, Beverage processing
- Automotive Industry
- Water Pump Industry

Our Objectives

Our objective is to supply high quality products from well known manufacturers. Over the years, our constant commitment to customer satisfaction has enabled us to grow continuously and add new high quality products to our range.

We provide on time deliveries since we keep in stock the majority of the products that our customer needs. It is our policy to provide quality after sales service since this is extremely important to make sure that our customers can an uninterrupted operation.

We supply bulk Hoses, fittings & accessories as well as the limited range of the hose assemblies based on the customer requirements. Those assemblies are tested and certified internally.

Another service that we provide is the set up of the complete hydraulic workshops with all the necessary products as well as the training for making assemblies. This is for companies that wish to do their hydraulic assemblies in house

FLUID TRANSFER PRODUCTS FLEXIBLE HOSE FOR VARIOUS APPLICATION



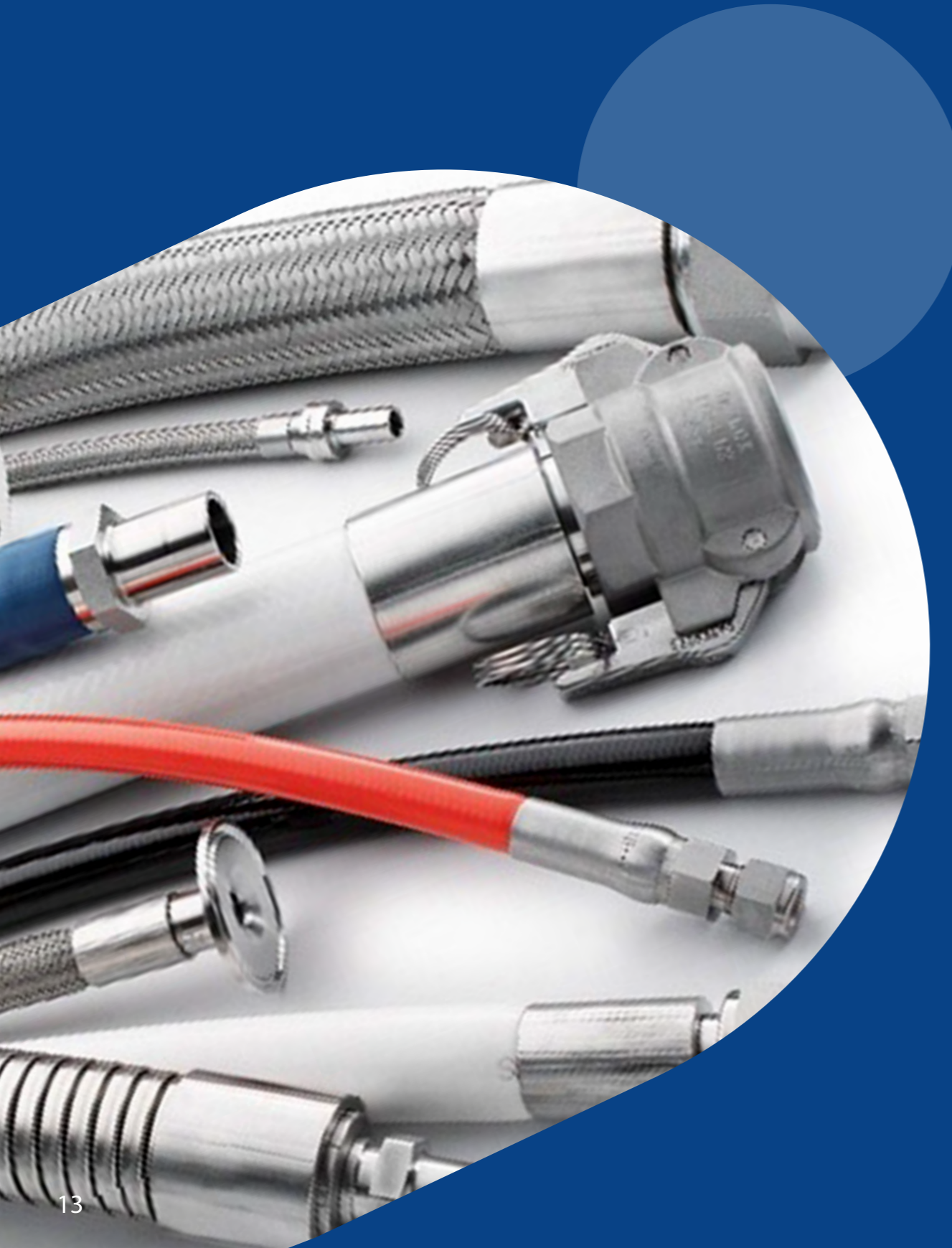
INDUSTRIAL HOSES



Oil Hoses & Fuel Hoses

- Oil delivery hose wrapped cover
- Oil delivery hose smooth cover
- Oil suction hose 10 bar
- Oil suction hose 20 bar
- Petroleum hose
- Petrol tanker hose
- LPG hose
- Multi purpose hose
- Aircraft refuelling hose
- Fuel hose
- Fuel hose cotton braid
- Food Hose
- Chemical Hose
- Concrete Pump Hose

Industrial Hoses



ABRASION RESISTANCE

- Sandblast
- Concrete pump hose
- Cement Hose
- Plaster hose
- Dredging hose

FOOD QUALITY HOSES

- Food delivery hose
- Food suction hose

THERMOPLASTIC

- PSH 1
- PSH 2
- PSH - K
- SAE 100 R8
- SAE 100 R7
- SAE 100 R7 Twin version

PVC

- SPVC
- PVC

AIR HOSES

- Air brake hose
- Air hose 15 bar
- Air hose 20 bar
- Heavy duty air hose

WATER HOSES

- Sewer cleaning hose
- Water suction hose 10 bar
- Water suction hose 20 bar
- Steam hose
- Radiator hose
- Water hose
- Water blast hose
- Furnaces hose
- Cable cooling hose

OTHERS

- PTFE (Teflon)
- Welding hose
- Fire fighting hose
- Stainless steel hose
- Mining hose
- Chemical hose

INDUSTRIAL HOSES RUBBER, FUEL, OIL HOSES



Hydraulic Hoses



- 1 TE DIN EN 854
- 2 TE DIN EN 854
- 3 TE DIN EN 854



- SAE 100 R3 DIN EN 854
- SAE 100 R4 DIN EN 854
- SAE 100 R5
- SAE 100 R7
- SAE 100 R13
- SAE 100 R15



- 1SN DIN EN 853
- 2SN DIN EN 853
- 4SP DIN EN 856
- 4SH DIN EN 856

Composite Hoses

- Oil
- Fuel
- Chemical
- LPG
- LNG
- Marine (Loading & Unloading)

Compotec® - ROBUST® offers the most extensive and varied composite hose range for an extremely wide range of applications. Precision engineered end fittings complete the range. Boasting a temperature range of - 200° C (Cryotec hose), to + 200°C (Hi Temp hose) and pressure ratings of 10, 15 and up to 40 bar for special types, COMPOTEC® - ROBUST® hoses are lined with either Polypropylene or PTFE, giving the hose excellent resistance to solvents, chemicals, acids, resins, and petroleum based products.

Composite Hoses



Compotec® - ROBUST® OIL hoses can be supplied in the FIRETEC version with ADR self-extinguish CL1 cover. Burst pressure indicated, is at ambient temperature when tested in accordance with EN ISO 1402 (BS 5173 section 102.10:1990). Electrical continuity is achieved by the two wires bonded to the end fittings, this helps dissipate accumulated charge and to avoid static flash. The electric resistance of hose assemblies is less than 1 ohm/mt, as required by EN ISO 8031:2009 – 4.7. Upon request it's possible to manufacture Compotec® - ROBUST® hoses in accordance to the Directive 94/9/EC "ATEX", with a special outer antistatic black cover, ground connection cable, for explosive environment.

EN 13765:2015 Type 1:
Vapor Oil – Light Duty

EN 13765:2015 Type 2:
Oil SD – Standard Duty

EN 13765:2015 Type 3:
il 800 HD – Heavy Duty

Compotec® - ROBUST® CHEM hoses can be supplied in the FIRETEC version with ADR self-extinguish CL1 cover. Burst pressure indicated, is at ambient temperature when tested in accordance with EN ISO 1402 (BS 5173 section 102.10:1990). Electrical continuity is achieved by the two wires bonded to the end fittings; this helps dissipate accumulated charge and to avoid static flash. The electric resistance of hose assemblies is less than 1 ohm/mt as required by EN ISO 8031:2009 – 4.7. Upon request it's possible to manufacture Compotec® - ROBUST® CHEM hoses in accordance to the Directive 94/9/EC "ATEX", with a special outer antistatic black cover and ground connection cable, for explosive environment.

EN 13765:2015 Type 1:
Vaporchem – Light Duty

EN 13765:2015 Type 2:
Chem SD – Standard Duty

EN 13765:2015 Type 3:
Chem 700 HD – Heavy Duty

Compotec® - ROBUST® HITEMP 305 is specifically designed as a hose for the transfer of HOT OIL and BITUMEN under positive or negative pressures, HITEMP 305 hose are used in such applications as transfer for rail and road tanker loading and unloading, storage tank and in-plant use. Extremely flexible, easy to handle and bend, even at very high or very low outdoor temperatures. All hoses are 100% aromatic resistant, antistatic and can be used for suction or discharge. Vacuum rating is 0,9 bar, according to the EN ISO 7233 method B. Thanks to the inner PTFE NANOTEC® construction, nothing sticks to the inner wall of the hose, and due to absence of inner corrugations or convolutions, (smooth body), nothing will remain trapped in it.

EN 13765:2015 Type 4:

Hitemp 305
Hitemp Firetec STD
Hitemp Firetec Glass
Hitemp Firetec Pyrojacket
Hitemp Twin Hose

Compotec® - ROBUST® FOOD 500 is a multi-layer thermoplastic hose designed around several Ultra High Molecular Weight Polyethylene (UHMW PLT) liners, supported by 316 L Stainless Steel inner and outer wires, with a weather-proof and abrasion resistant outer cover made of Polyvinyl coated Polyester fabric. Outer cover is also available in ELASTAR, a special PU coated fabric with extra UV, Ozone, Sunlight and weathering resistance, offering superior temperature and abrasion characteristics. Extremely flexible, easy to handle and bend, FOOD 500 hose complies with International regulations, for all the application in direct contact with food.

EN 13765:2015 Type 3:

Food 500 UHMW inside
AbraFood Polyurethane
inside FoodFlow
Nanotec®

Compotec® - ROBUST® HIGRADE 101 hose it's an High purity Fuel hose. Jet fuel or aviation turbine fuel (ATF) is a type of aviation fuel designed for use in aircraft powered by gas turbine engines. It is colourless to straw-colored in appearance. The most commonly used fuels for commercial aviation are Jet A and Jet A-1, which are produced to a standardized international specification. The only other jet fuel commonly used in civilian turbine-engine powered aviation is Jet B, which is used for its enhanced cold-weather performance.

EN 13765:2015 Type 2:
Higrade SD

EN 13765:2015 Type 3:
Higrade 101 HD

Compotec® - ROBUST® HD 16 PTFE NANOTEC Composite hoses PTFE Nanotec Composite hose with SS inner and outer spiral for aggressive chemicals. The superior chemical resistance of fluoropolymers make these composite hose ideal for transfer of a wide range of very hazardous chemicals. Because of the special construction this hose is very flexible and easy to handle. The extreme strong Nanotec PTFE material liner ensures superb durability and higher operating temperatures

ROBUST®

ROBUST®

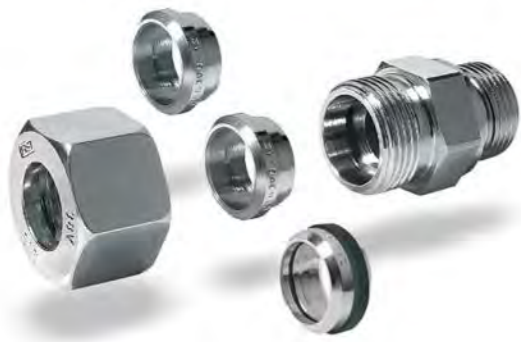


Fittings & Adapter

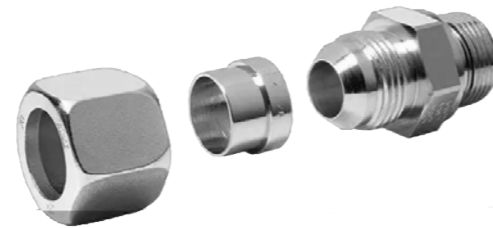
- Hydraulic Hoses
- Hose Fittings
- DIN Adaptors
- ORFS Adaptors
- Cleaning Devices
- Hose Assembly
- Machinery
- Accessories
- Test Benches
- BSP Connectors
- SAE Adaptors



DIN B3 B4 BP



JIC



BS



ORFS



VALVE



C4



Fittings & Adapter

- Hydraulic Fittings
- Adapters
- Quick Release Couplings
- Accessories



Quick Release Coupling

Very High Pressure Quick Released Coupling With Safety Lock

- Quick Connect Couplings for Breathing Air Applications.
- Quick Connect Products for High Pressure Hydraulic Application. Up to 3000 Bar
- High-pressure Hose assemblies Up to 2500 Bar
- Non-Drip Quick Connect Couplings
- Pneumatic Products - (Coupling, Multi-link System, Hose kits, Hose, Hose & Cable Reels, Blowguns, FRL Products, Safety Products).
- The complete multiple coupling system for mold cooling applications
- Quick-seal A unique patented concept of manifold couplings
- Auto-Couplings For Multiple Connection Syst

ROBUST®

Quick Release Coupling



Hydraulic Quick Coupling Group



Flat Face Coupling Group



High Pressure and Ultra High Pressure Quick



Screw Type Hydraulic Quick Coupling



Pneumatic Product Group



Mano Meter Test Group



Hydraulic Swivel Joint Group



Hydraulic check Valve Group



Quick Release Coupling



- Hydraulic Flow Control Valves Group



- Hydraulic Ball Valves Group



- Special Ball Valves Group



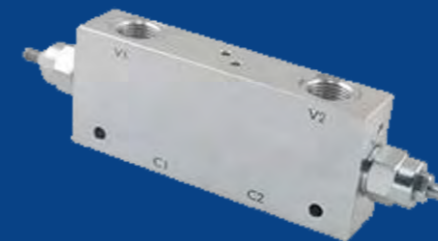
- Mining Ball Valves Group



- Hydraulic Valve Group



- Hydraulic Pressure Relief Valves Group



- Hydraulic Over Center Valves Group



- Hydraulic Subplates Group



CRIMPING MACHINES

Techmafex crimping machines come in a variety of sizes and capacities, making them ideal for everything from one-off, small bore maintenance jobs, to full scale assembly production operations.

Machines



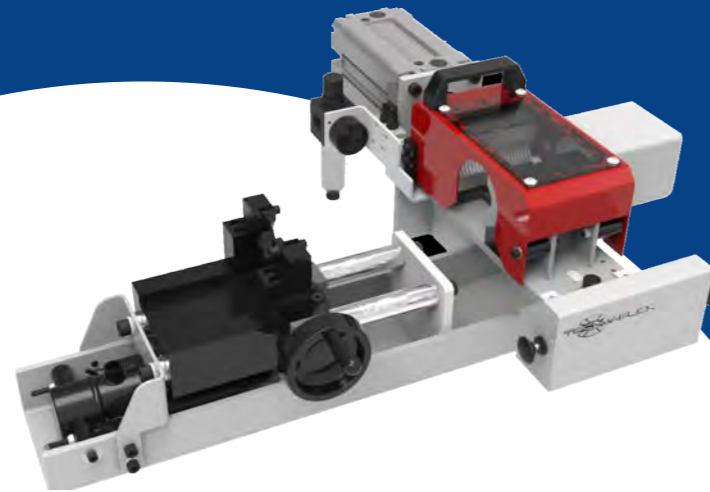
CUTTING MACHINES

Our dedicated range of hose cutting machines have been developed to be safe, efficient and produce a high-quality of cut through even the toughest hose structures. With a selection of cutting disc styles available, there's no job that our cutting machines can't cope with.



SKIVING MACHINES

From manual hand-skiving tools for low volume maintenance outfits, to high volume production machines, our skiving equipment provides a clean, safe hose skive whatever your hose type (for both internal and external skive).



INSERT PUSHING

Struggling to get those larger bore fittings into the hose?

Our insert pushing equipment takes the effort and uncertainty out of building hose assemblies by making sure that fittings are fully inserted prior to crimping.

Machines



TEST BENCHES

Designed to apply proof-pressure testing to assembled hoses, our test benches allow you to test and certify hose assemblies up to 4,000 bar.



FERRULE MARKING

Ensure full traceability with our ferrule marking equipment, complete with a full set of alphanumeric and additional character punches.

ROBUST®

Hose Sleeves



Hose Sleeves

Hose Sleeve, Blankets & other
Products for high temperature
application (from 260°C to 1093°C)



INSULFLEX®

Hose Sleeves

Insulflex® fire sleeve protects hoses, lines, cables and wires...
guard your personnel... and cut your energy losses.



• COOL BLUE
FIRE SLEEVE



• EAF CABLE
COVER



• PYREFLECT
FIRE SLEEVE



• AEROSTYLE
PYROJACKET



• INDUSTRIAL
PYROJACKET



• PYROJACKET
VCO



• SILICAFLEX
FIRESLEEVE



• THERMO
SLEEVE B



• THERMO
SLEEVES



• FLEXGUARD
FIRESLEEVE

Fire Blanket



● PYRO BLANKET
17 oz



● PYRO BLANKET
32 oz



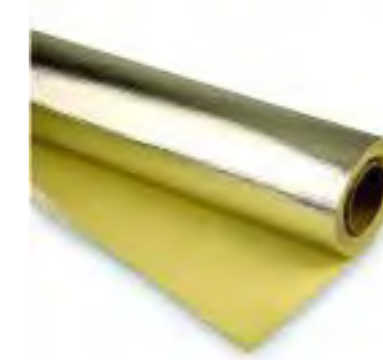
● SILICAFLEX
BLANKET



● PYRO BLANKET
96 oz



● SILICAFLEX
BLANKET AB



● PYREFLECT
BLANKET



● FIBERFLECT
BLANKET



● REMOVABLE
INSULATION
COVER

Heat Resistant Tape



● PYRO TAPE



● PYROSIL TAPE



● SILICAFLEX TAPE
AB

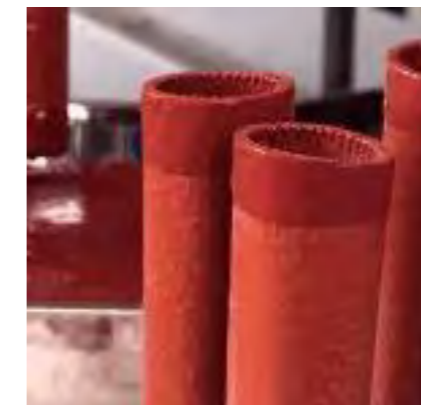


● FIBERFLEX TAPE

High Temperature Sealant



● PYRO SEALANT



● ODOURLESS
END DIP



● Endless worm-drive band and housing



● Supra CT Constant tension Heavy duty Hose clamp Stainless steel

ROBUST® Clamp - Low Pressure



DIN 3021 Spring Band Clamp

One Ear Clip

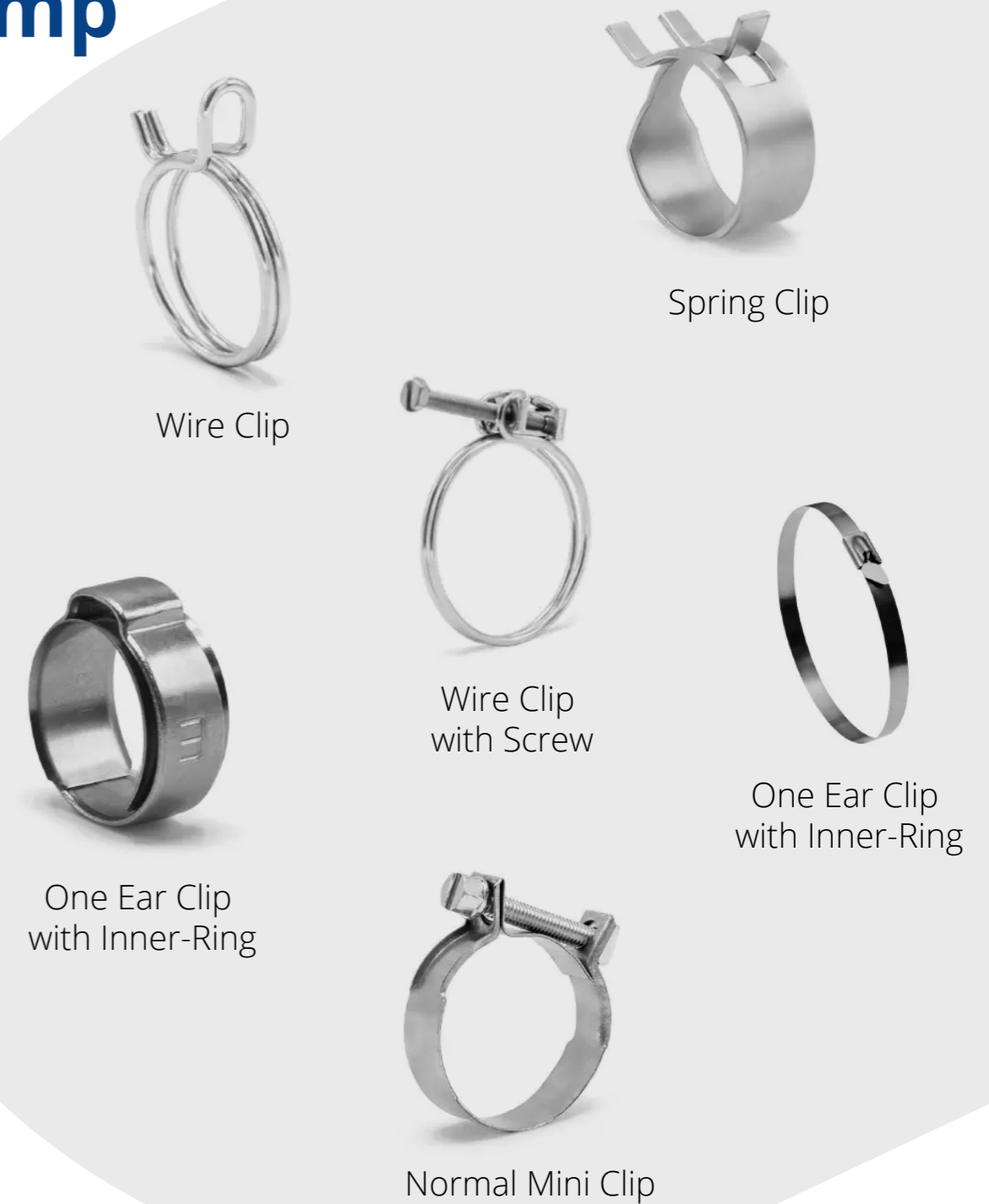
One Ear Clip

Clip Clamp

OEM Ear Clip

ADAPFLEX Endless Band and Housing

Clamp



Wire Clip

Spring Clip

Wire Clip with Screw

One Ear Clip with Inner-Ring

One Ear Clip with Inner-Ring

Normal Mini Clip

ROBUST® Clamp - Medium Pressure



ASFA S (12 mm)
Hose Clamp



ASFA S (12 mm)
Hose Clamp - Black



ASFA High Torque
(16 mm) Hose Clamp



ASFA L (9mm)
Hose Clamp



ASFA L (9 mm)
Hose Clamp - Black



ASFA L7
Worm-Drive Clip



Fixed Diameter Clamp



Open Worm-Drive Clip

ROBUST®

Clamp - High Pressure



Super Heavy-Duty Clamp



Supra Heavy-Duty Clamp



Supra Constant Tension
Heavy-Duty Clamp



Supra 2-Bolt
Heavy-Duty Clamp

Vast majority of the products is available on the stock



ROBUST® Market Area

